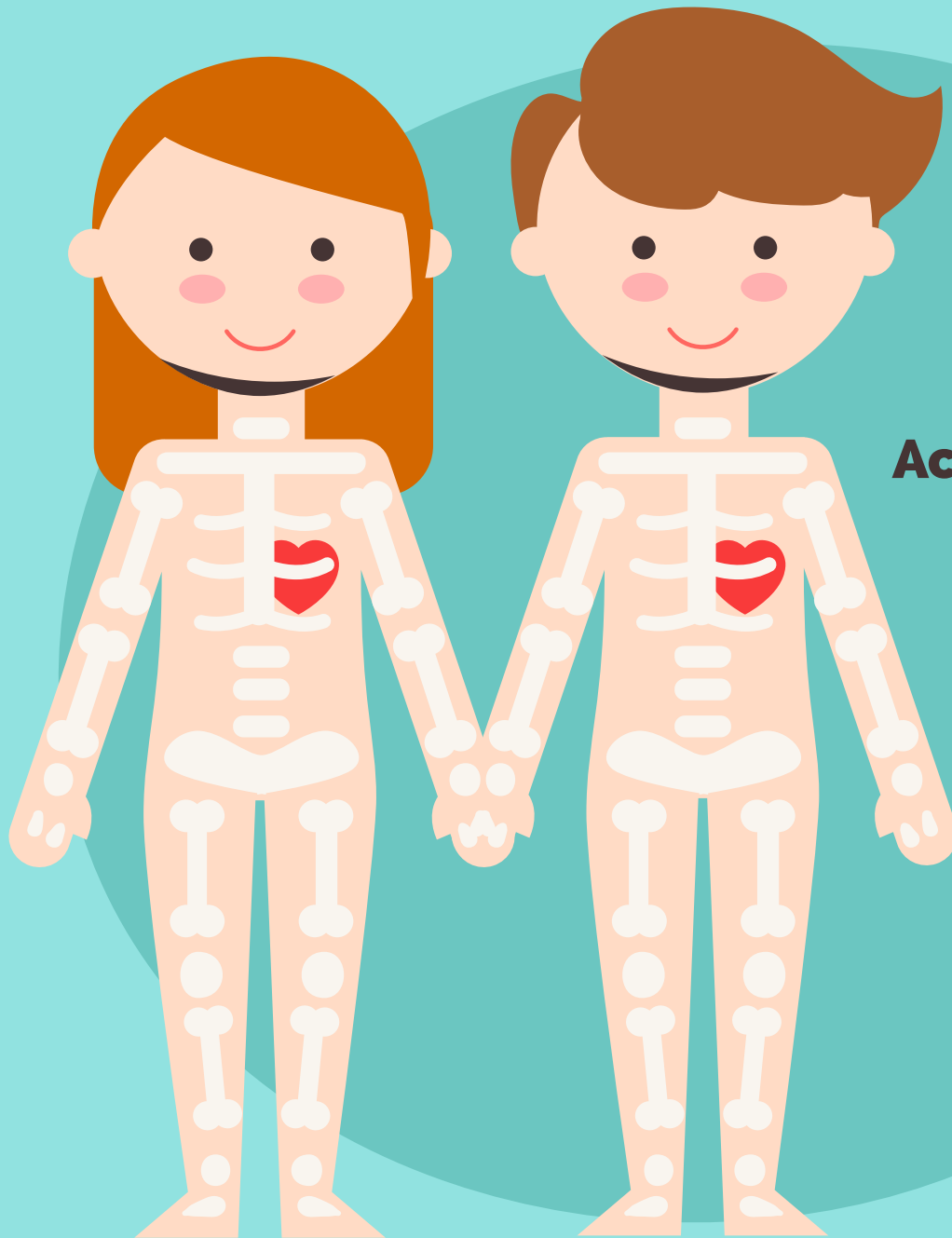
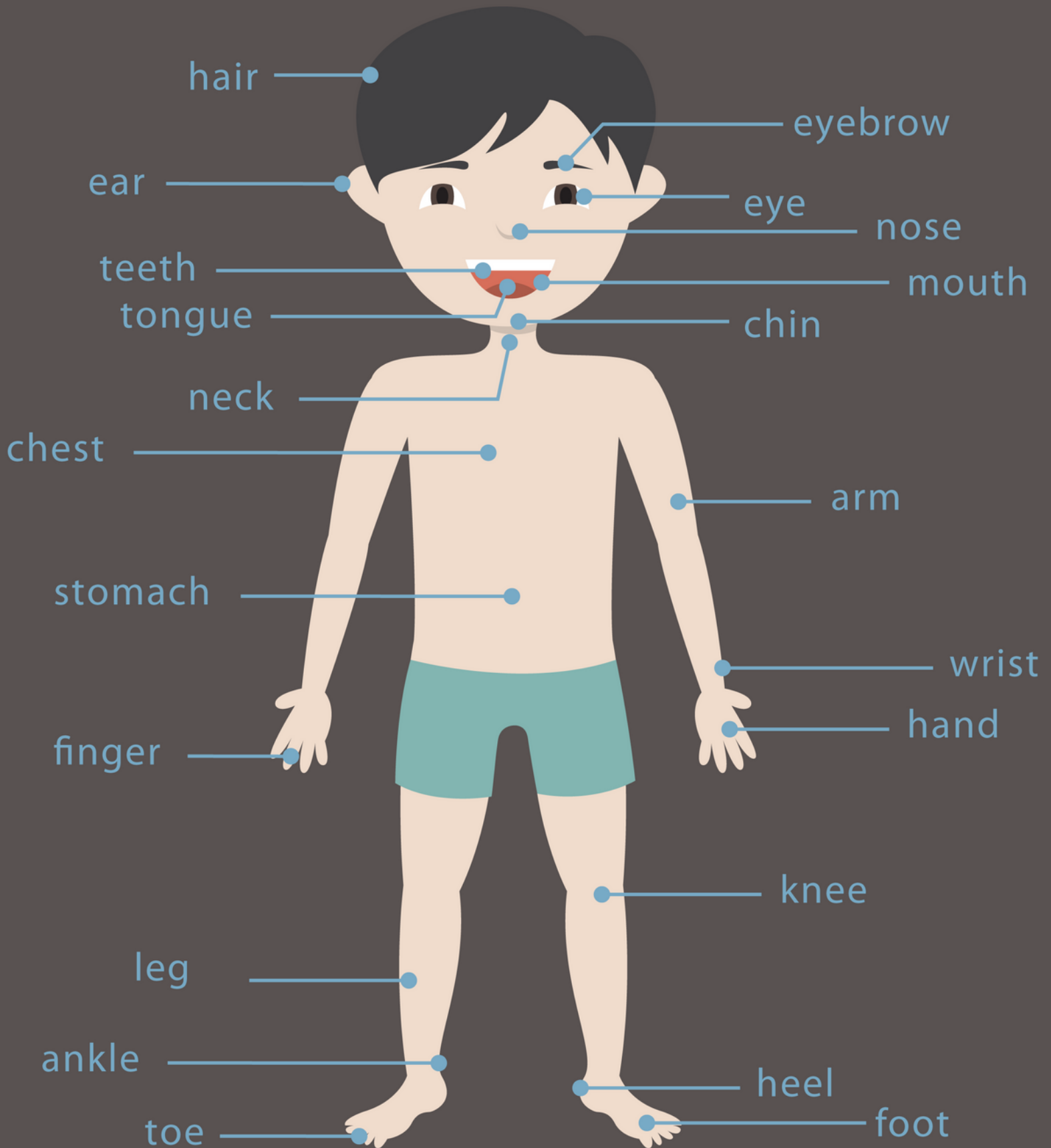


How Does My Body Look On the Inside?



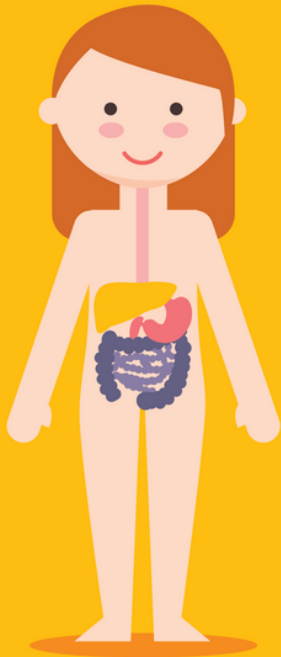
**My Body
Activity Book**

PARTS OF THE BODY

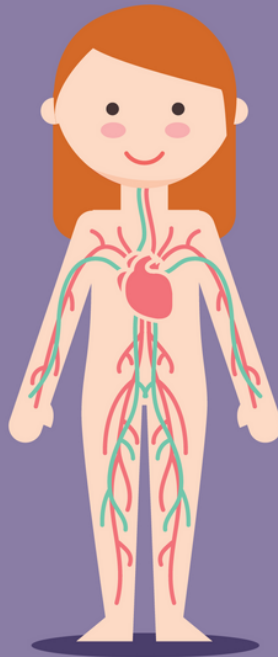


Flash Cards

DIGESTIVE SYSTEM



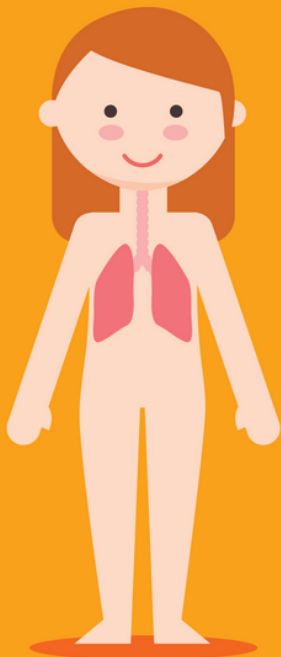
CIRCULATORY SYSTEM



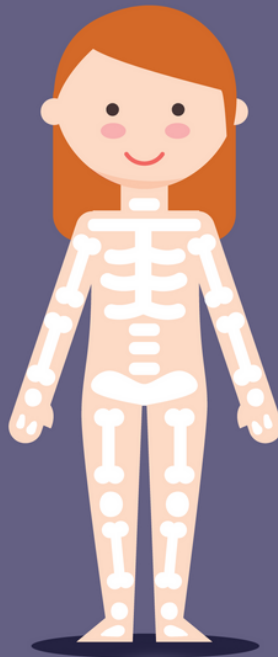
MUSCULAR SYSTEM



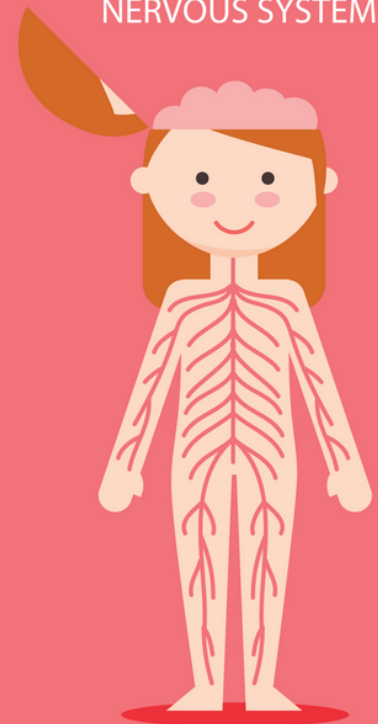
RESPIRATORY SYSTEM



SKELETAL SYSTEM



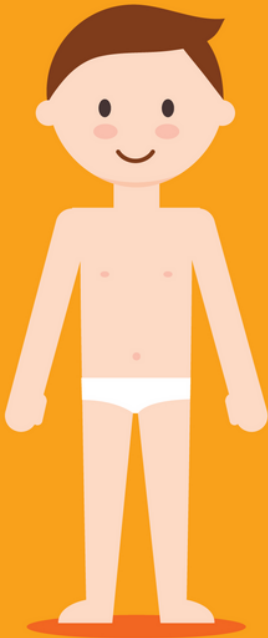
NERVOUS SYSTEM



Body Systems

Flash Cards

HUMAN BODY SYSTEMS



CIRCULATORY SYSTEM



MUSCULAR SYSTEM



DIGESTIVE SYSTEM



SKELETAL SYSTEM

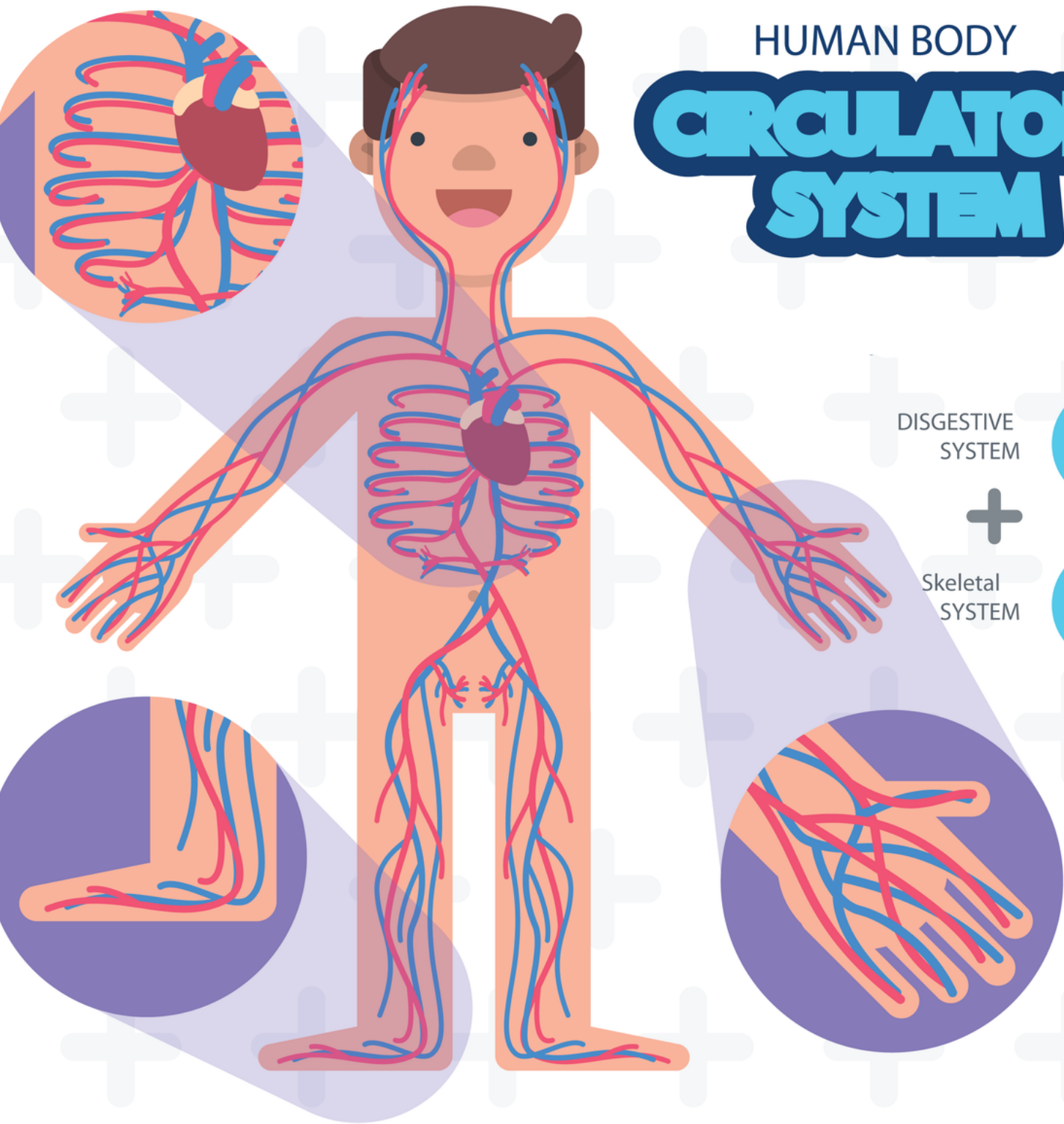


NERVOUS SYSTEM



Body Systems

HUMAN BODY **CIRCULATORY SYSTEM**



DISGESTIVE
SYSTEM

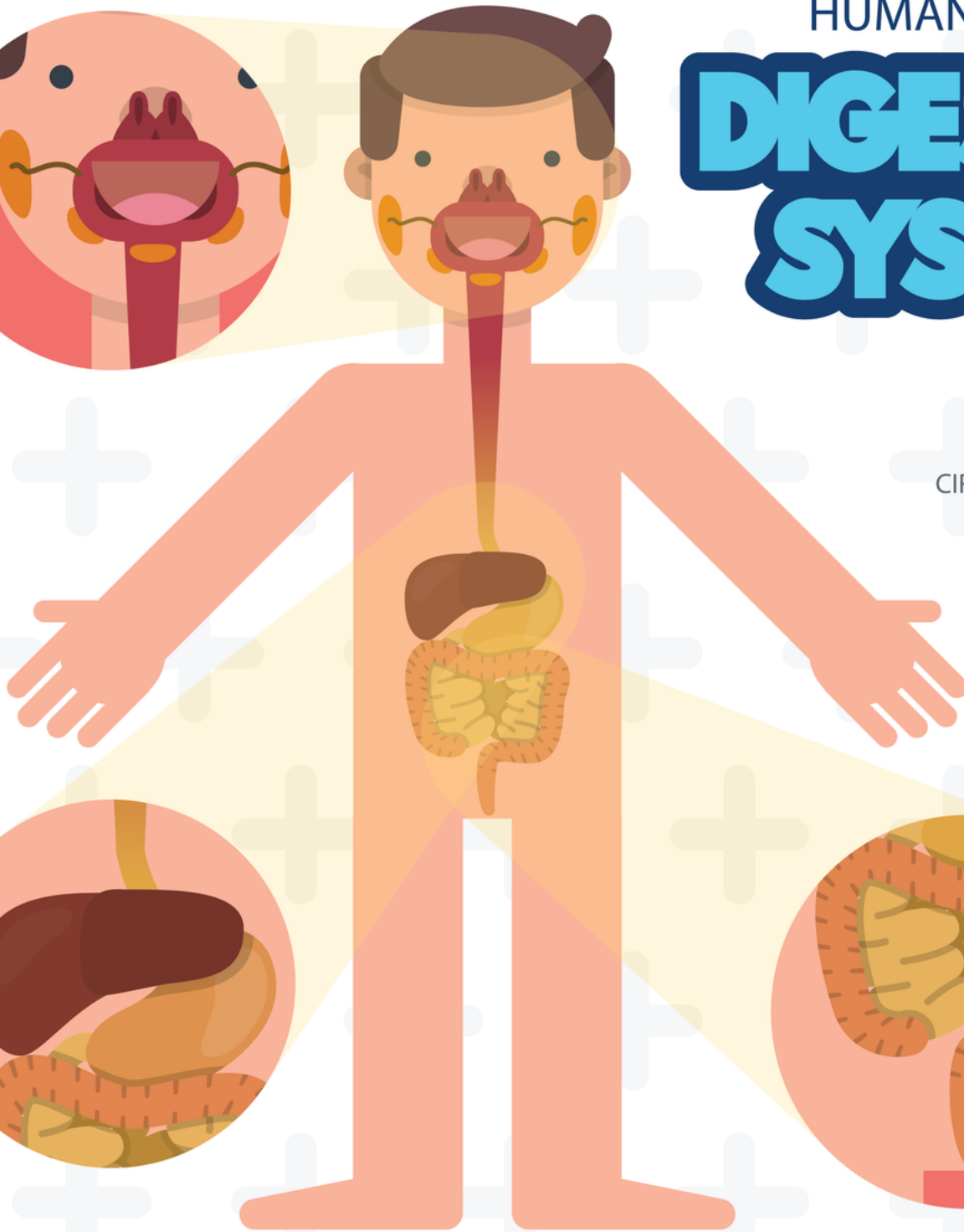


Skeletal
SYSTEM



HUMAN BODY

DIGESTIVE SYSTEM



CIRCULATORY
SYSTEM

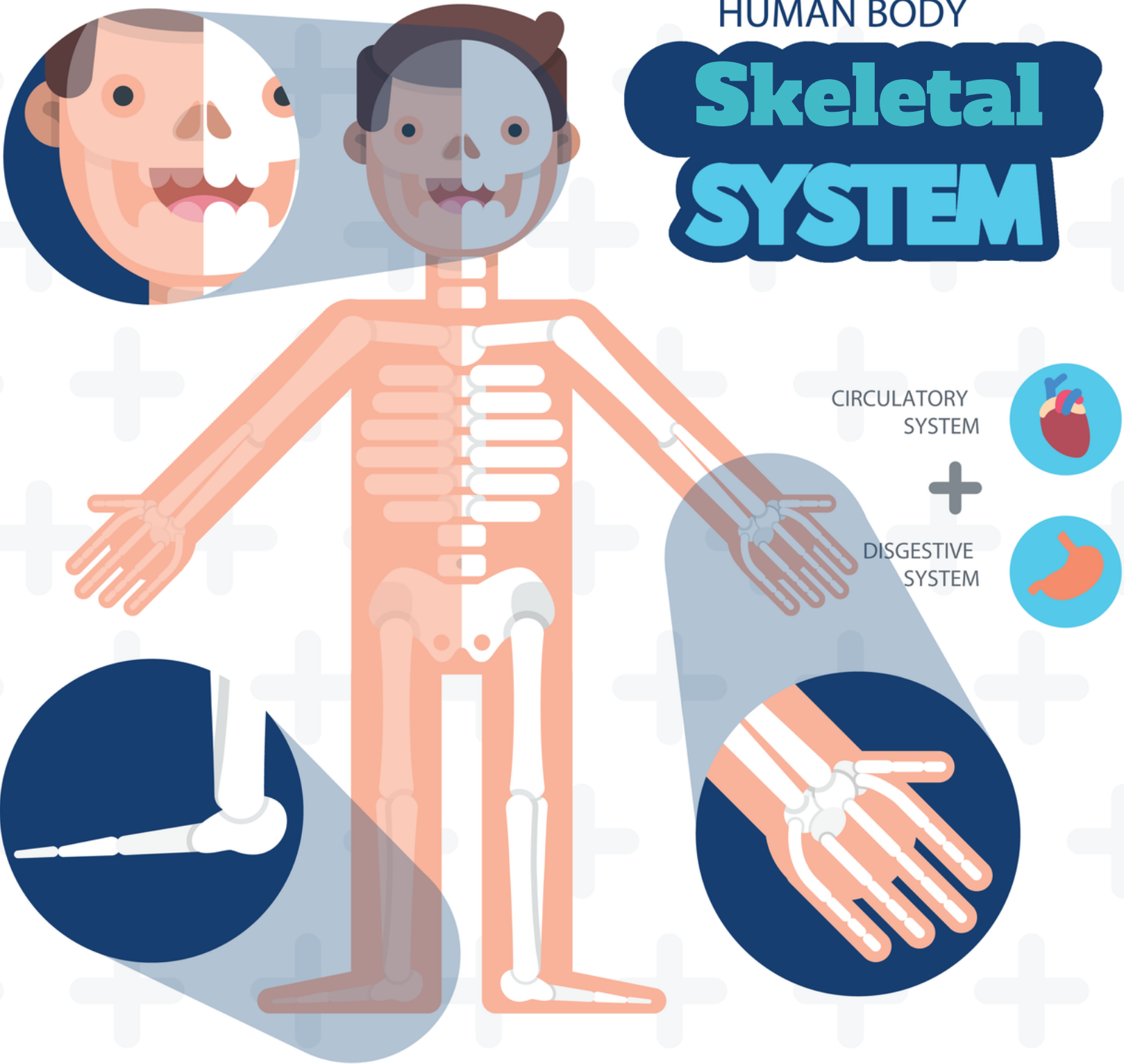


Skeletal
SYSTEM

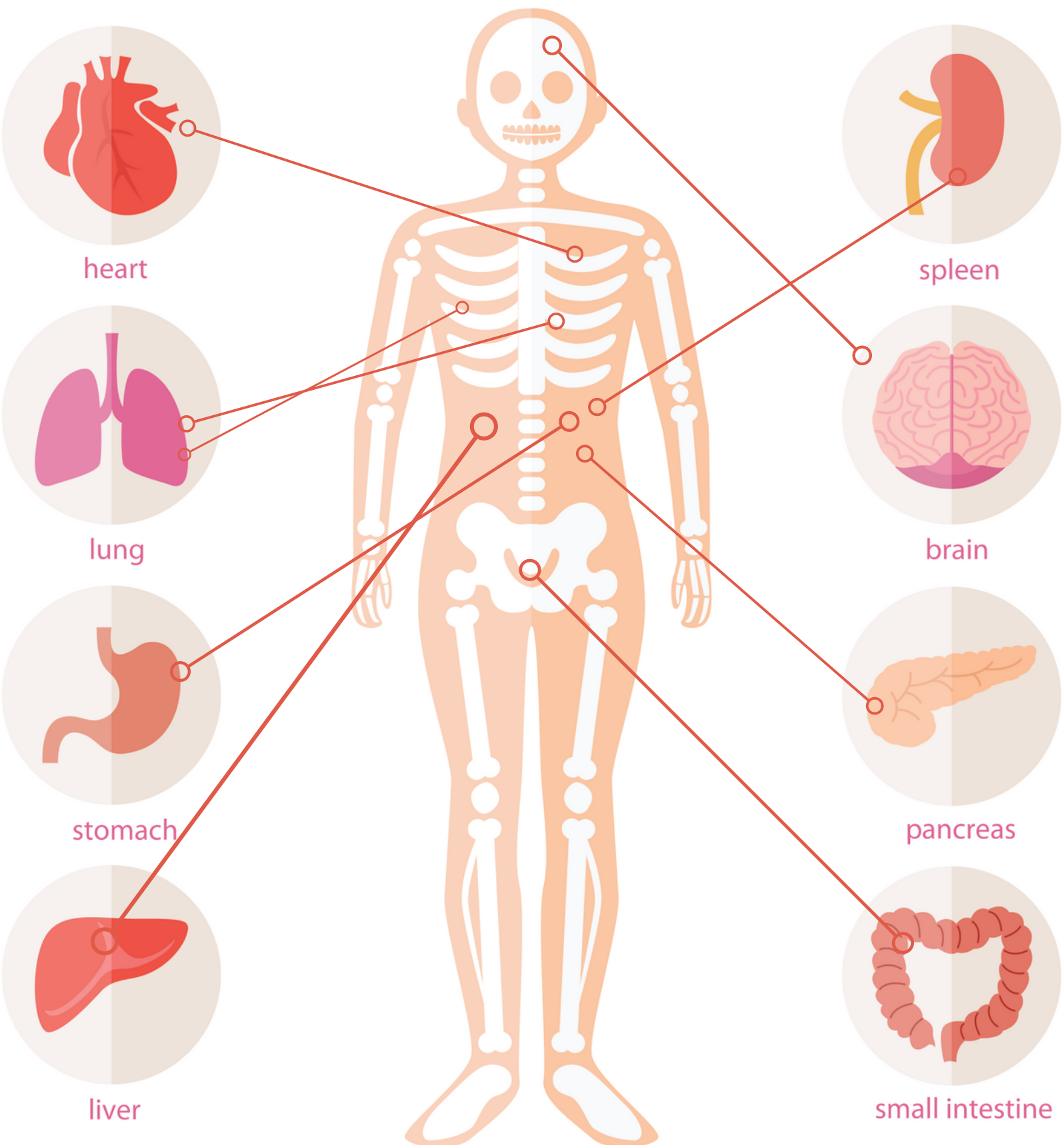


HUMAN BODY

Skeletal SYSTEM



Location of Organs



Different Bones



rib cage

The bony frame formed by the ribs around the chest.



humerus

The bone of the upper arm or forelimb, forming joints at the shoulder and the elbow.

Elbow



clavicle

The bones joining the breastbone to the shoulder blades.

Wrist



shin-bone

The larger bones between the knee and the ankle.

Ankle

Neck



disks

Each of the series of small bones forming the backbone.

Spine

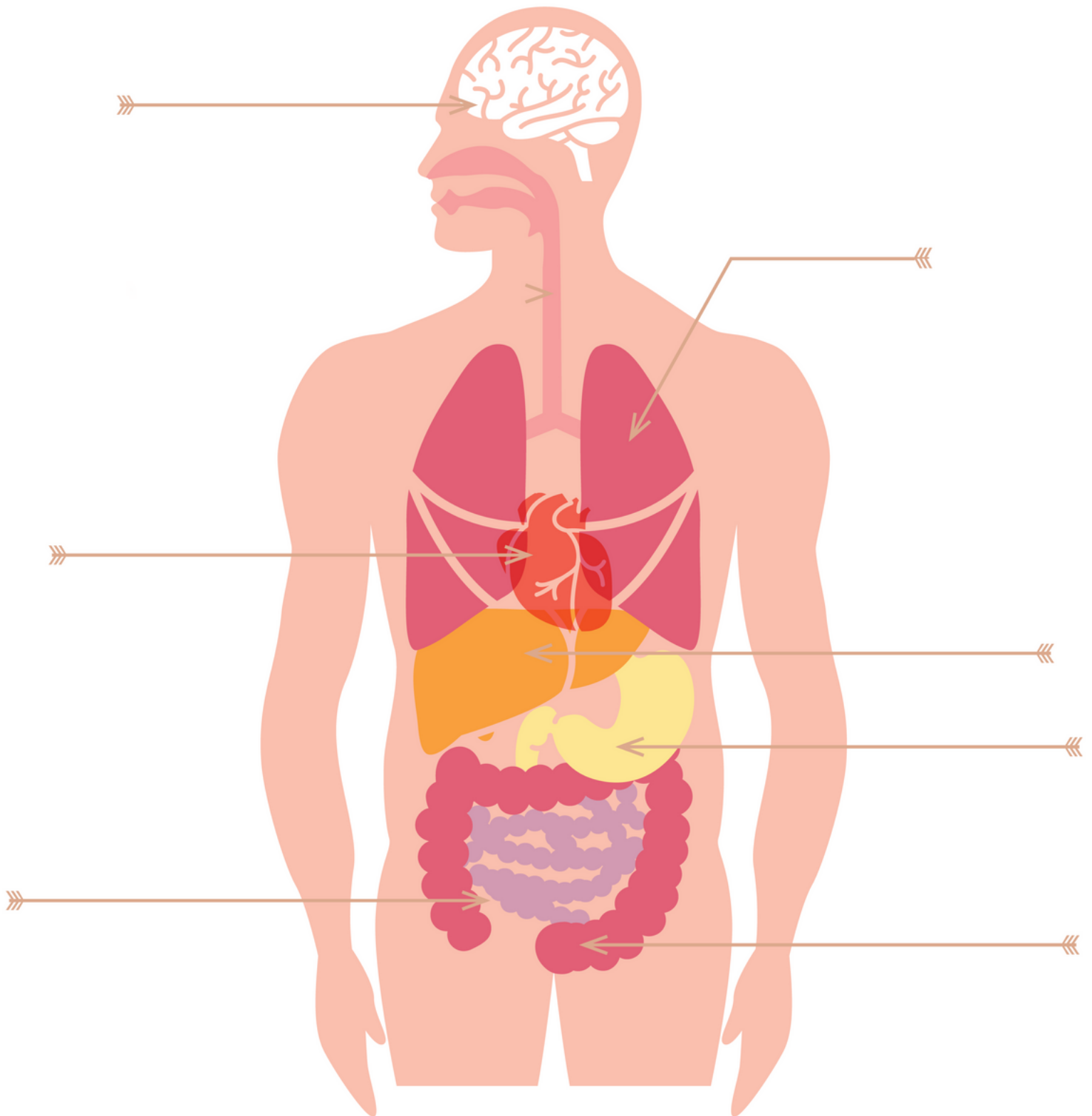
Knee



pelvis

The large bony structure near the base of the spine to which the hind limbs or legs are attached.

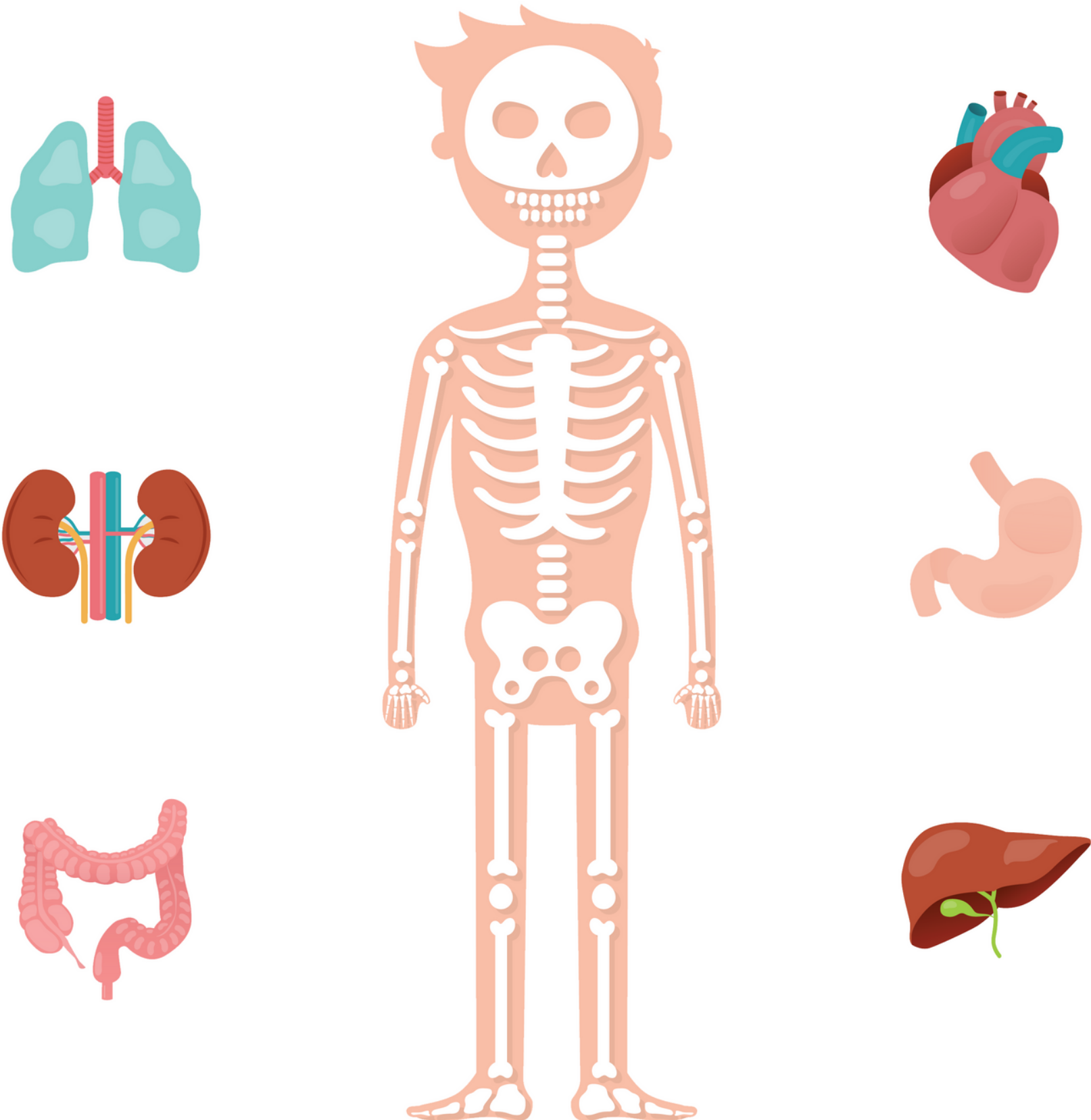
Label the Organs





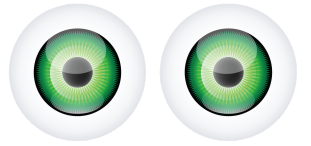
Matching

Match each organ to the correct part of the body.





I HAVE THIS MANY...



FINGERS

CHEEKS

FACE

TOES

ELBOWS

NECK

LEGS

SHOULDERS

HEAD

ARMS

ARMS

TONGUE

WRISTS

KNEES

LIPS

ANKLES

CHIN

CHEST

EYEBROWS

FEET

BACK

EARS

EYE BALLS

BODY

HANDS

EYE LIDS